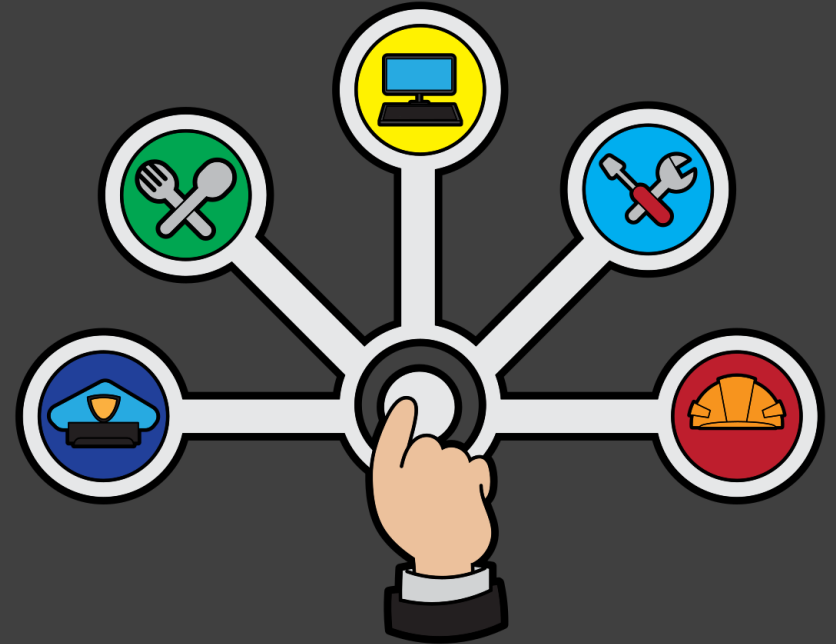




PACIFIC NW
FEDERAL CREDIT UNION

Career Planning



What would your PERFECT career be?

In pairs or small groups (2-4 students) please discuss:
If you could have any career, what career would you choose?

Career planning...

is a deliberate process of discovering WHO you are so you can be sure of WHERE you want to go and WHAT you want to be at some defined point in the future.



5 steps to career planning

Step 1: Self Assessment

Step 2: Explore Work/Career Options

Step 3: Narrow Down List of Work/Career Options

Step 4: Choose the Best Option for You

Step 5: Set a Career Goal

Today we will focus on self-assessment and exploring your options

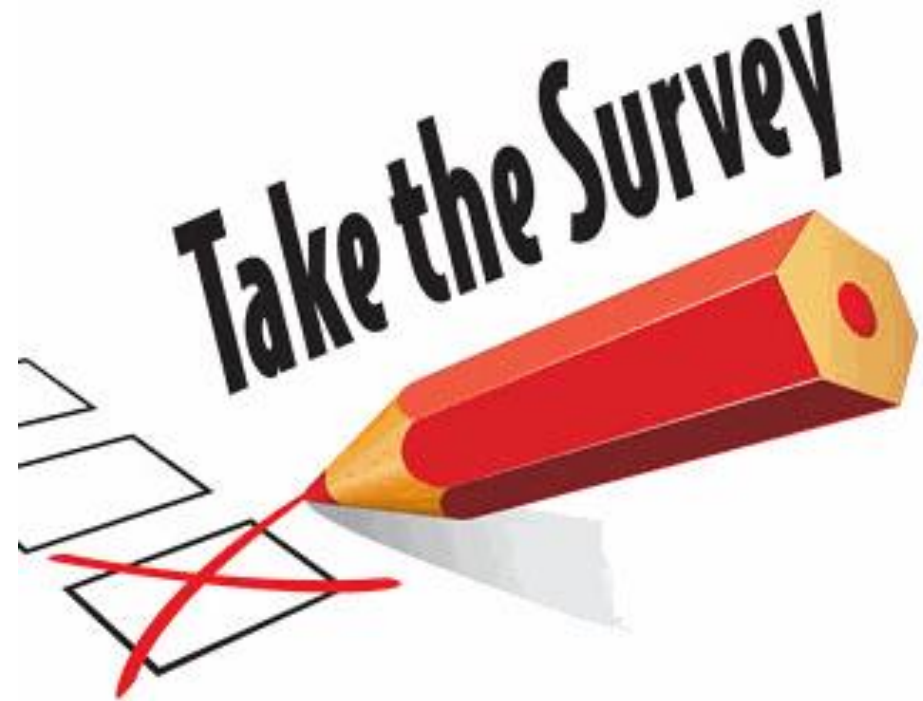
To better understand yourself we'll do a self-assessment to see what you are naturally drawn to.

We'll then pick a career (or two) to explore what a day in the life of that chosen profession would be like.



Career Survey

- Take the career survey with an open mind
- Answer ALL questions even if neither option fits with your preferences.
- Have fun with this! Ultimately YOU are the one who will decide what your future looks like. Enjoy the tools along the way that can help you gain clarity.



- Try to picture a day as a (Fill in the blank)
- Go to the US Bureau of Labor's Occupational Handbook at - **<https://www.bls.gov/ooh/a-z-index.htm>**
- Use your research guide to determine what your life would look like in this career.
- If you finish early, look through other possible career options OR research the “perfect career” you thought of at the beginning of the lesson.
- Start to think about what boxes need to be checked for you to consider a career. Schooling? Time? Certificates? What do you need?
- Any deal breakers?



Reporting your research

What did you find when you researched your potential careers?

Did your research make you more or less excited to pursue each career?

*When you've completed your research, share what you discovered with a partner who has also completed their research.

Career Interview

As a potential extension to this exercise, please consider interviewing a professional within the career you are interested in. You have great potential to learn from their experiences!

*Potential interview questions have been listed at the end of your career research guide.



PACIFIC NW

FEDERAL CREDIT UNION

Questions? Contact us at Kristinm@pnwfcu.org